

SOLD



1B Wattletree Court, Maiden Gully



Delightful and charming homestead on 5.10 acres - extremely unique and beautiful

- Simply one of the most charming and beautifully presented homes on a lovely 5.10 acres!
- Fabulous and sensible design with charming features four bedrooms and four living areas and a timber staircase to the upper level, wherever you look there are great views of the surrounding landscapes
- Extremely unique steel clad home with gable roof, dormer windows, wrap around verandah and the home has been built to blend in with the natural environment
- Lovely staircase to the upper level offering three bedrooms, family room and bathroom. Master bedroom with ensuite is on the lower level and there is an additional sitting room that could be used as a fifth bedroom.
- Timber and tiled kitchen with gas cooking, pantry, dishwasher and ample storage
- Plenty of outdoor space across this lovely 5.10 acre property with 3 bay carport/machinery shed, separate workshop and a dam

4 Beds 2 Baths 3 Cars 5.10 ac

Price	SOLD
Property Type	Residential
Property ID	688
Land Area	5.10 ac
Floor Area	241 m2

Agent Details

Paul Dalton – 0417502201

Office Details

Eaglehawk
42 Goldsmiths Road
Eaglehawk, VIC, 3556
Australia
03 5448 3322



**GAVIN
BUTLER**
REAL ESTATE

- Extensive storage including Harry Potter storage under the stairwell
- Solar power, solid fuel heater (3.0kw system), airconditioner, 90,000 litres rainwater storage
- Fabulous and interesting windows creating a light and airy interior with a beautiful outlook
- Established gardens and ample grounds to commence growing your own produce, fruit, eggs etc all year round
- Just a few minutes into the highly desirable suburb of Maiden Gully – one of Bendigo's most highly sought after suburbs
- Ample water storage with 90,000 litres rain water storage in tanks plus a 1 meg dam.
- Close to popular Marist College, local shops, chemist, bakery, IGA and more

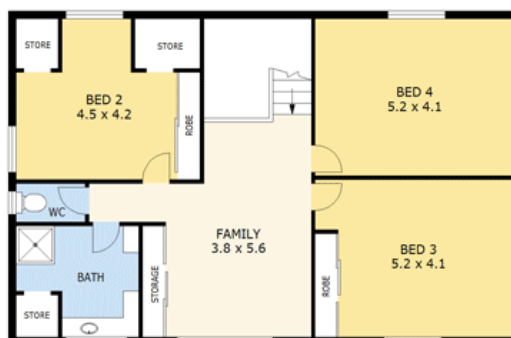
A rare opportunity presents to secure this wonderful life style property and to enjoy the warmth and cosiness this family home has to offer the growing family. Set on 5.10 acres with forest backdrop. Oozing with charm and character it will delight most home buyers and is very worthy of inspection.

This information has been provided to us by third parties and we do not accept any responsibility for its accuracy. You should make your own enquiries and check the information so as to determine whether or not this information is in fact accurate. You must make your own assessment and obtain professional advice if necessary.

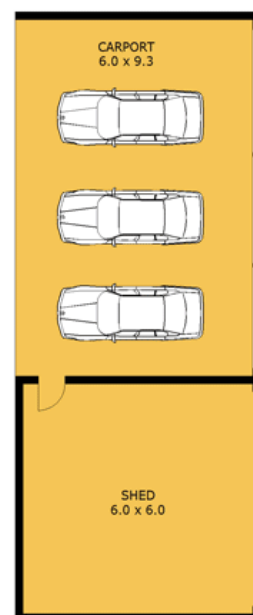
The above information provided has been furnished to us by the vendor/s. We have not verified whether or not that information is accurate and do not have any belief in one way or the other in its accuracy. We do not accept any responsibility to any person for its accuracy and do no more than pass it on. All interested parties should make and rely upon their own inquiries in order to determine whether or not this information is in fact accurate.



GROUND FLOOR



FIRST FLOOR



NOT IN POSITION



Scale in metres. Indicative only. Dimensions are approximate. All information contained herein is gathered from sources we believe to be reliable. However we cannot guarantee its accuracy and interested parties should rely on their own enquiries.

Ground Floor	- 114 m ²
First Floor	- 108 m ²
Verandah	- 77 m ²
Carport	- 58 m ²
Shed	- 36 m ²
Total	- 393 m²



1B Wattletree Court, Maiden Gully

