

SOLD



36 Clarke St, Kennington



Classic cream brick home in excellent blue chip locale!

- Beautiful cream brick veneer residence with some original features on a 664m2 block in the highly sought after suburb of Kennington
- Updated bathroom, floor furnishings - home presents exceptionally well
- Offering four bedrooms, all good sized rooms, Birs, great storage
- Features lovely cornices, stone fire surround etc
- Fabulous block of 664m2 opposite Kennington Primary School
- Absolutely blue chip locale close to all services and La Trobe University
- Current shed has been set up as a fully self contained man shed offering many options
- Undercover entertainment area for those summer barbecues
- Investors looking for position! position! Look no further, huge growth area!
- Ducted gas heating, Split system reverse, gas heater and

4 Beds 2 Baths 1 Cars 664 m2

Price	SOLD
Property Type	Residential
Property ID	555
Land Area	664 m2
Floor Area	141 m2

Agent Details

Gavin Butler - 0427 887 766

Office Details

Eaglehawk
42 Goldsmiths Road
Eaglehawk, VIC, 3556
Australia
03 5448 3322



**GAVIN
BUTLER**
REAL ESTATE

airconditioner for all seasons

- Excellent tenants wishing to stay on if available to them.

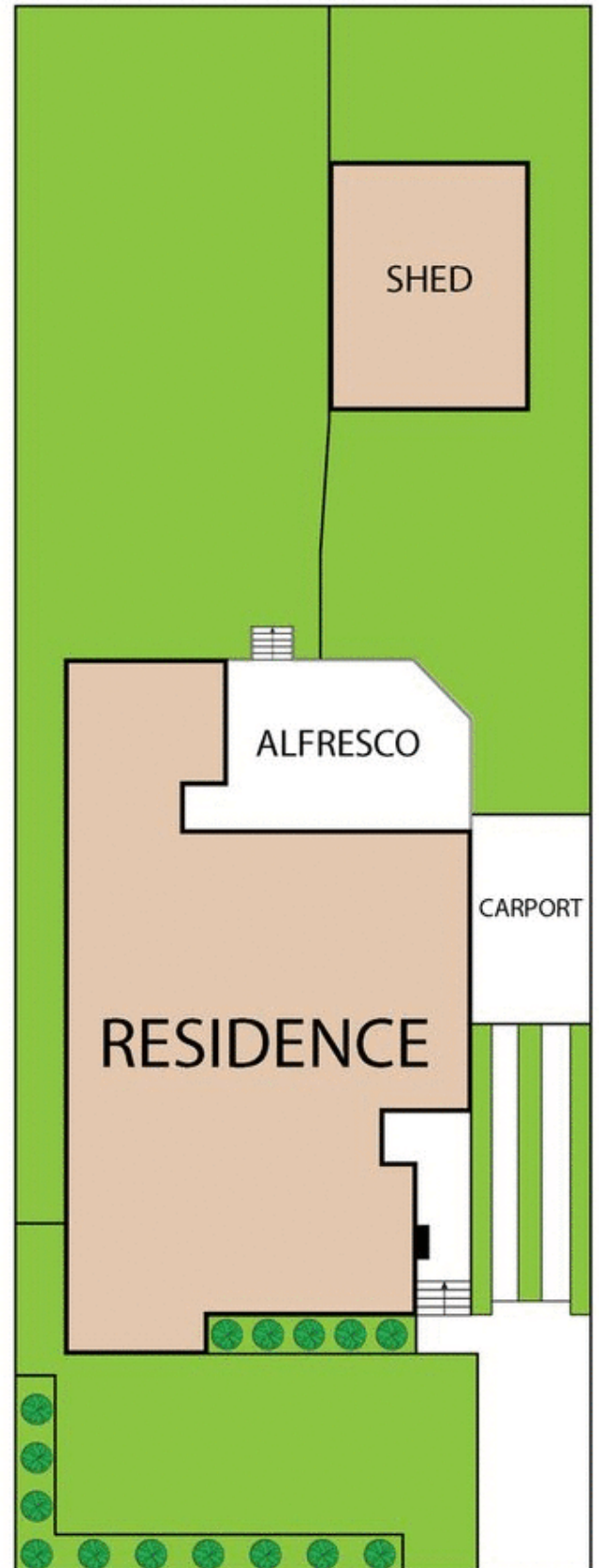
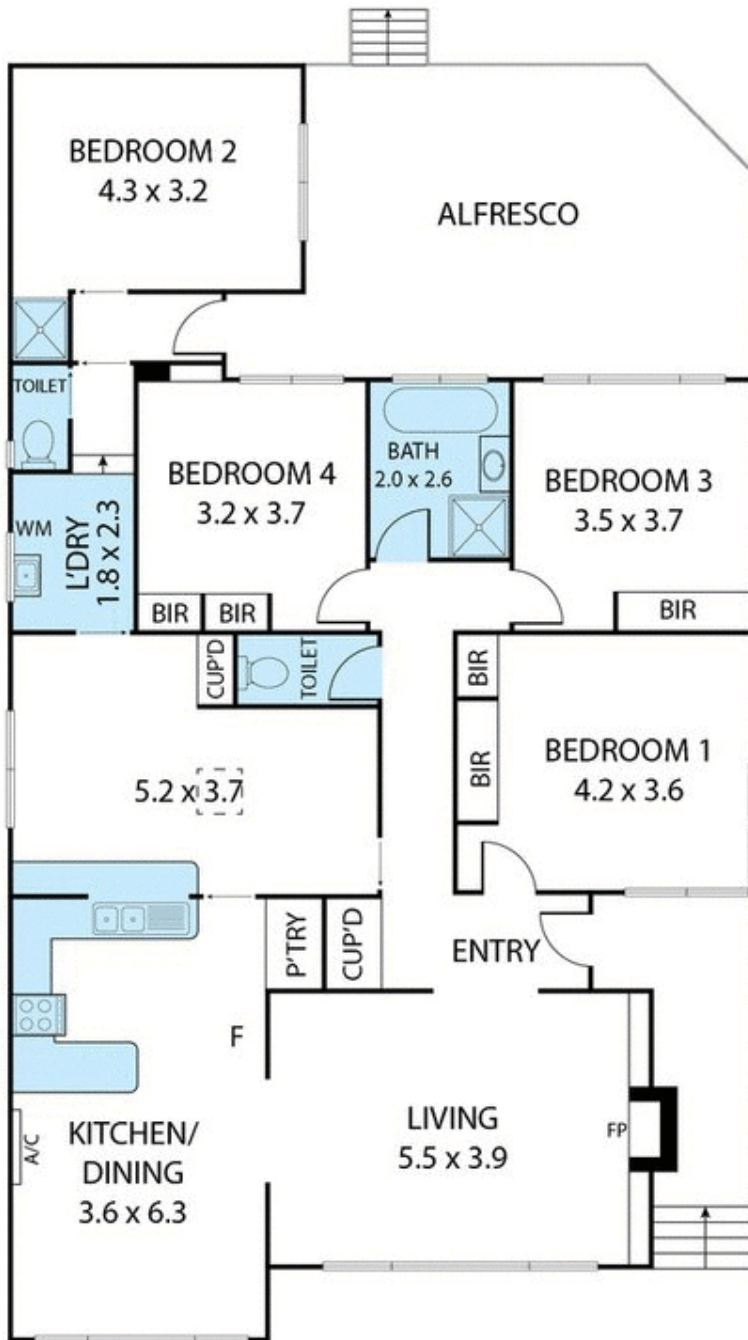
Leased at \$410pw which includes landlord subsidysing utilities at the moment

- A truly fabulous home – simply call Gavin for an inspection

For those that are not aware Kennington is one of the most highly sought after areas in Bendigo and the locale of this home is no exception. Just a few minutes drive or walk to central Bendigo and the La Trobe University make this a prime location and prime real estate. Nearby is Strath Hill shopping village, Bendigo South East College, Kennington Primary school, Bendigo Railway Station and Bendigo Marketplace. Such an appealing home will create enormous interest. Please give Gavin a call for a private inspection on any day.

This information has been provided to us by third parties and we do not accept any responsibility for its accuracy. You should make your own enquiries and check the information so as to determine whether or not this information is in fact accurate. You must make your own assessment and obtain professional advice if necessary.

The above information provided has been furnished to us by the vendor/s. We have not verified whether or not that information is accurate and do not have any belief in one way or the other in its accuracy. We do not accept any responsibility to any person for its accuracy and do no more than pass it on. All interested parties should make and rely upon their own inquiries in order to determine whether or not this information is in fact accurate.



36 Clarke Street, Kennington 3550

TOTAL APPROX. FLOOR AREA 141 SQ.M

Whilst every attempt has been made to ensure the accuracy of the floor plan contained here, measurements of doors, windows, rooms and any other items are approximate and no responsibility is taken for any error, omission, or misstatement. This plan is for illustrative purposes only and should be used as such by any prospective purchaser.