

SOLD



13 Nottingham Ct, White Hills



## Very nice family home in excellent condition and great locale

- Ideal home for first home buyers, families or investors - beautifully presented
- Offering three brms (Birs) and two bathrooms - home is in excellent condition
- Master bedroom with ensuite and walk in robe
- New vinyl plank flooring, new double blinds with blackout, new split system
- Kitchen/meals area plus spacious separate lounge
- Split system and gas heaters for heating and cooling for all seasons
- Good size block of approx. 729m2 with garden shed
- Undercover entertainment area and/or tandem carport
- Fantastic locale in a quiet court only minutes to Lake Weeroona, new Hospital, schools, public transport and all amenities!
- Close to Botanic gardens, White Hills Primary and, Weeroona College

This beautiful home is in excellent condition and an inspection will

3 Beds 2 Baths 2 Cars 729m2  
Land Area

<b>Price</b>	SOLD
<b>Property Type</b>	Residential
<b>Property ID</b>	539
<b>Land Area</b>	729 m2
<b>Floor Area</b>	107 m2

### Agent Details

Gavin Butler - 0427 887 766

### Office Details

Eaglehawk  
42 Goldsmiths Road  
Eaglehawk, VIC, 3556  
Australia  
03 5448 3322

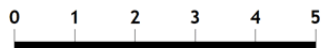
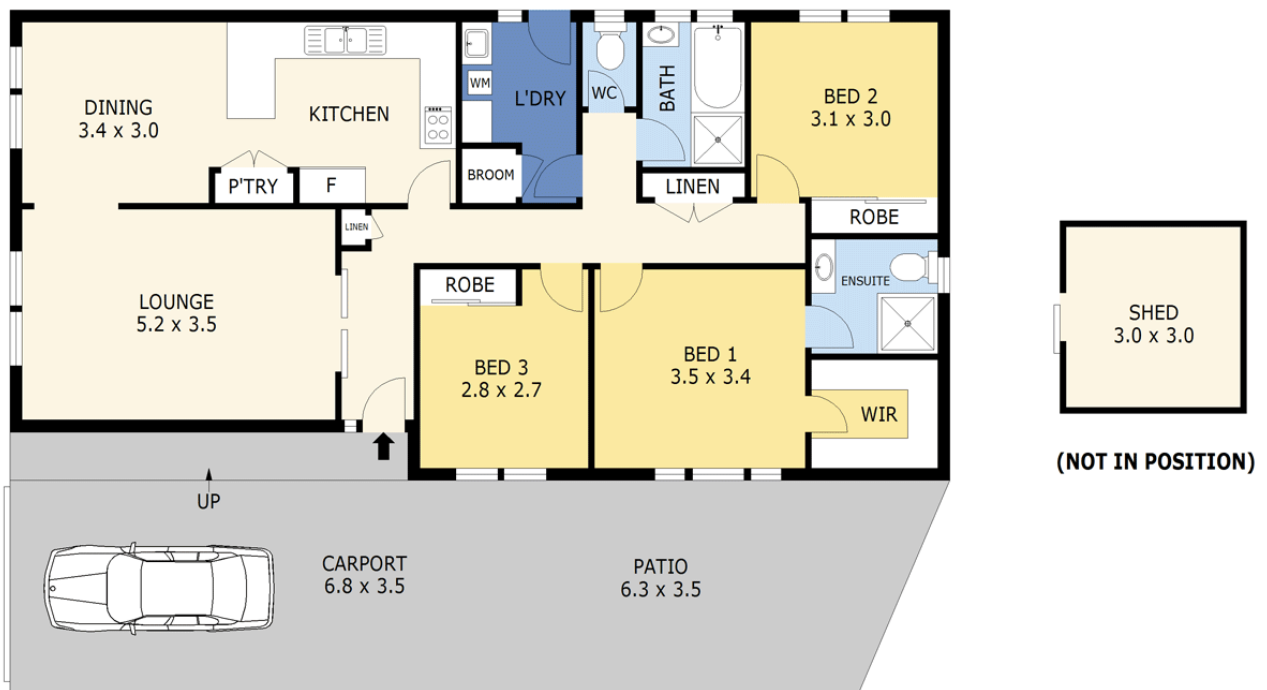


**GAVIN  
BUTLER**  
REAL ESTATE

please all. expense has been done. The home is in a highly sought after location close to schools and all amenities. An inspection is highly recommended to avoid any disappointment.

This information has been provided to us by third parties and we do not accept any responsibility for its accuracy. You should make your own enquiries and check the information so as to determine whether or not this information is in fact accurate. You must make your own assessment and obtain professional advice if necessary.

*The above information provided has been furnished to us by the vendor/s. We have not verified whether or not that information is accurate and do not have any belief in one way or the other in its accuracy. We do not accept any responsibility to any person for its accuracy and do no more than pass it on. All interested parties should make and rely upon their own inquiries in order to determine whether or not this information is in fact accurate.*



Scale in metres. Indicative only. Dimensions are approximate. All information contained herein is gathered from sources we believe to be reliable. However we cannot guarantee its accuracy and interested parties should rely on their own enquiries.

Residence	- 107 m <sup>2</sup>
Patio	- 28 m <sup>2</sup>
Shed	- 9 m <sup>2</sup>
Carport	- 24 m <sup>2</sup>
Total	- 168 m <sup>2</sup>



# 13 Nottingham Court, White Hills

