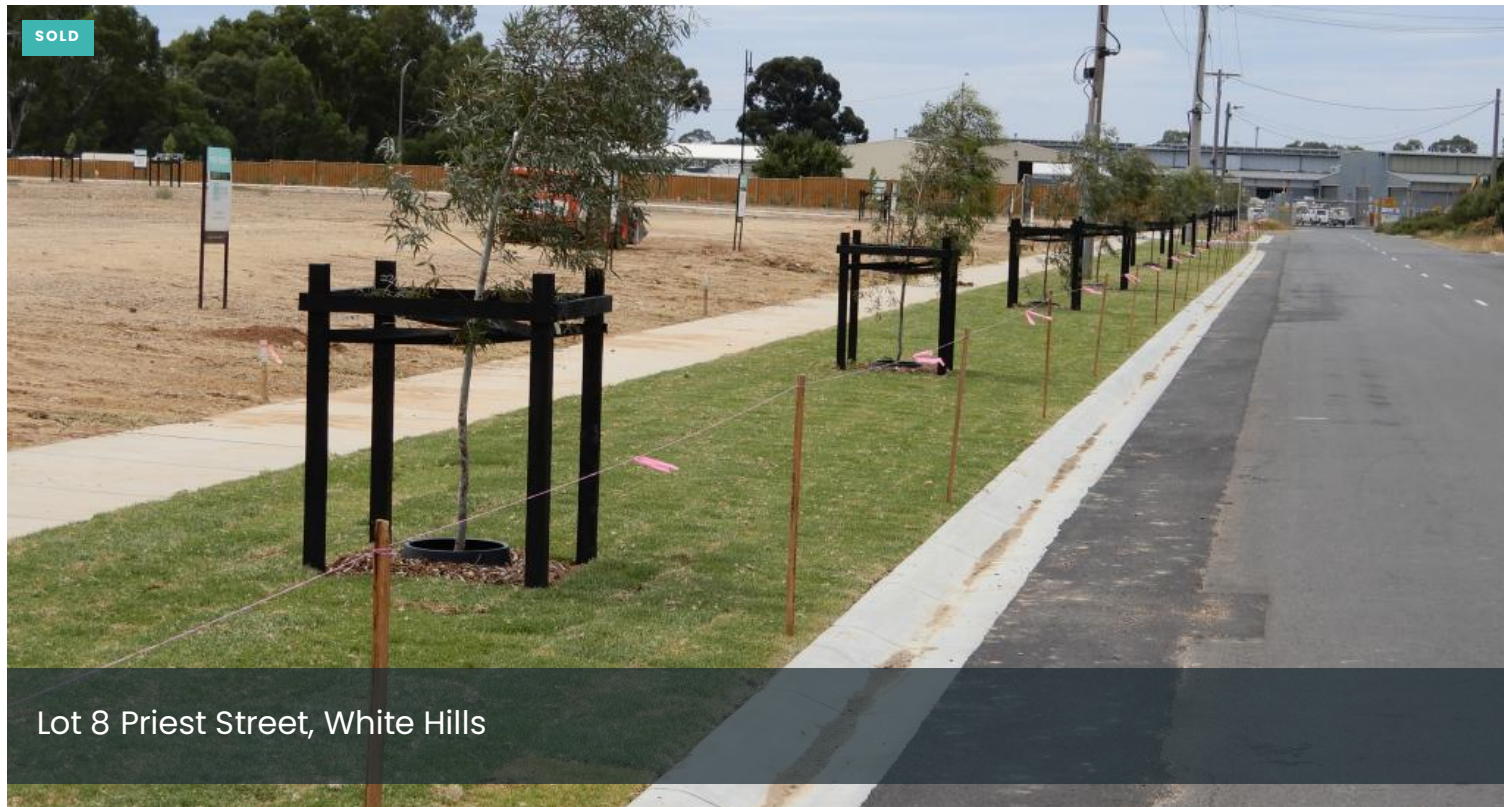


SOLD



Lot 8 Priest Street, White Hills



New sub-division - titled blocks- 629m2

- A very nice 629m2 block across the road from the beautiful Botanic Gardens
- All services and NBN ready
- Set in Bendigo`s fastest selling sub-division - many homes have commenced to be built
- 16.3 metre frontage and 32.8 metre depth (629m2)
- Only minutes to central Bendigo and walk to White Hills amenities and shops
- Close to Lake Weeroona, Epsom shopping village and primary and secondary schools
- A place for families to live in a very boutique sub-division - the best location on offer in Bendigo at affordable prices
- Many blocks are sold so don`t miss this opportunity as blocks are selling fast!

Botanica Green is a classy sub-division undertaken opposite the Botanic Gardens. The Botanic Gardens is undergoing a transformation and expansion with \$31 million being spent. Living at Botanica Green allows you to walk across the road and enjoy all that the Botanic gardens continues to offer families and

629 m2

Price	SOLD for \$162,400
Property Type	Residential
Property ID	35
Land Area	629 m2

Agent Details

Gavin Butler - 0427 887 766

Office Details

Eaglehawk
42 Goldsmiths Road
Eaglehawk, VIC, 3556
Australia
03 5448 3322



**GAVIN
BUTLER**
REAL ESTATE

children

This information has been provided to us by third parties and we do not accept any responsibility for its accuracy. You should make your own enquiries and check the information so as to determine whether or not this information is in fact accurate. You must make your own assessment and obtain professional advice if necessary.

The above information provided has been furnished to us by the vendor/s. We have not verified whether or not that information is accurate and do not have any belief in one way or the other in its accuracy. We do not accept any responsibility to any person for its accuracy and do no more than pass it on. All interested parties should make and rely upon their own inquiries in order to determine whether or not this information is in fact accurate.