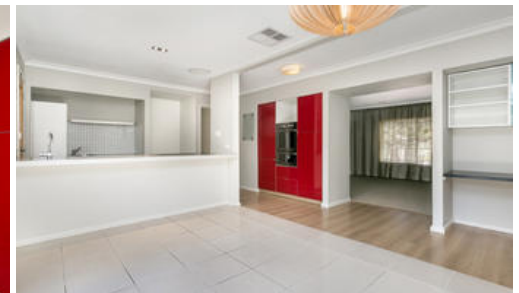




**24 Bayne St, North Bendigo**



## Four bedroom family home on the doorstep of the Hospital

- Beautiful freshly updated four brm home plus study nook on 1012m2 (1/4 acre)-built 1967 est.
- Very nice 1012m2 block with ample room to further develop (STCA). A very rare opportunity.
- Investors please note this property has the perfect location for growth and rental yield
- Open plan kitchen (induction hotplate) and separate large lounge
- Ducted gas heating and evaporative cooling for all seasons
- Master bedroom with ensuite (twin vanities) and walk in robe
- Potential for medical or allied health discipline and ample room for parking
- Only two minutes to central Bendigo and walk to the new Hospital.

This lovely brick rendered home is spacious and inviting on a quarter acre allotment in a highly sought after area. The home presents a fabulous opportunity for the astute investor to secure a fabulous home on a fabulous block with enormous potential.

This information has been provided to us by third parties and we do not accept any responsibility for its accuracy. You should make your own enquiries and check the information so as to determine whether or not this information is in fact accurate. You must make your own assessment and obtain professional advice if necessary.

The above information provided has been furnished to us by the vendor/s. We have not verified whether or not that information is accurate and do not have any belief in one way or the other in its accuracy. We do not accept any responsibility to any person for its accuracy and do no more than pass it on. All interested parties should make and rely upon their own inquiries in order to determine whether or not this information is in fact accurate.

4 2 2

<b>Price</b>	SOLD for \$457,000
<b>Property Type</b>	residential
<b>Property ID</b>	338
<b>Land Area</b>	1,012 m2
<b>Floor Area</b>	147 m2

### Agent Details

Gavin Butler - 0427 887 766

### Office Details

Epsom  
74 Midland Highway Epsom VIC 3551  
Australia  
03 5448 3322

