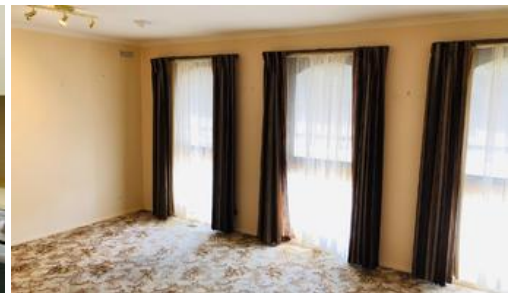




58A Peg Leg Rd, Eaglehawk



Impressive family home with two street access!

- Lovely 3 Bedroom brick veneer in great condition (On own title 843m2)
- Kitchen meals area plus separate Lounge
- Ducted gas heating and evaporative cooling
- Double carport, double garage/workshop and sundry shedding
- Under cover entertainment area overlooking the leafy fernery
- Yes, rear access to the property ideal for the tradie or a second home (STCA)
- A short drive to Eaglehawk CBD, Lakes, schools, shops and all amenities
- Perfect entry for the first home buyer or family in to the property market

This very nice home is ideal for the family wishing to enter the property market at an affordable price. A fabulous block of 843m2 approximately with two street access. The rear access has two double gates, so room to park the caravan or trailers etc

This information has been provided to us by third parties and we do not accept any responsibility for its accuracy. You should make your own enquiries and check the information so as to determine whether or not this information is in fact accurate. You must make your own assessment and obtain professional advice if necessary.

The above information provided has been furnished to us by the vendor/s. We have not verified whether or not that information is accurate and do not have any belief in one way or the other in its accuracy. We do not accept any responsibility to any person for its accuracy and do no more than pass it on. All interested parties should make and rely upon their own inquiries in order to determine whether or not this information is in fact accurate.

3 1 4

| | |
|----------------------|--------------------|
| Price | SOLD for \$295,000 |
| Property Type | residential |
| Property ID | 291 |
| Land Area | 843 m2 |
| Floor Area | 130 m2 |

Agent Details

Gavin Butler - 0427 887 766

Office Details

Epsom
74 Midland Highway Epsom VIC 3551
Australia
03 5448 3322

