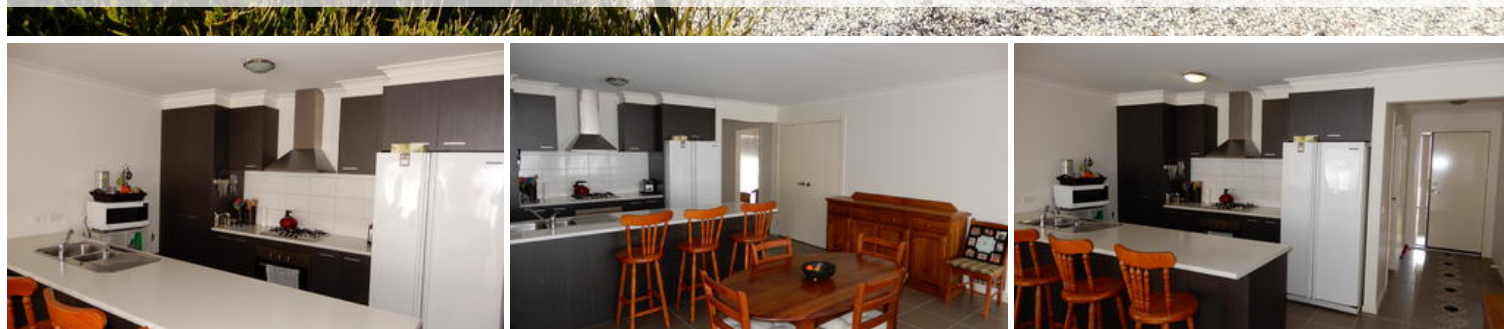


Sold



1 ONeil Court, Epsom



A delightful home on corner block and space for the caravan

3 bedrooms 1 bathroom 3 car spaces

- Lovely 3 bedroom home, master with two way bathroom and walk in robe
- Corner allotment (648m²) with side access for the caravan or vehicles
- Open plan kitchen, meals area and family room
- Very nice entertainment area overlooking low maintenance garden
- Ducted gas heating and split system for all seasons
- Save on energy costs with solar power and solar hot water service
- Nice 648m² block, all services and double auto garage
- Close to shopping centre, schools and all amenities

Price SOLD
Property Type residential
Property ID 146
Land Area 648 m²
Floor Area 110 m²

Agent Details

Gavin Butler - 0427 887 766

Office Details

Epsom
74 Midland Highway Epsom VIC 3551
Australia
03 5448 3322

This information has been provided to us by third parties and we do not accept any responsibility for its accuracy. You should make your own enquiries and check the information so as to determine whether or not this information is in fact accurate. You must make your own assessment and obtain professional advice if necessary.

The above information provided has been furnished to us by the vendor/s. We have not verified whether or not that information is accurate and do not have any belief in one way or the other in its accuracy. We do not accept any responsibility to any person for its accuracy and do no more than pass it on. All interested parties should make and rely upon their own inquiries in order to determine whether or not this information is in fact accurate.

